

## Where is HIFU available?

HIFU Prostate Services partners with the most experienced HIFU physicians and their established urology practices.

Dr. Michael Wolff is based in Burlington, NC at Alamance Urological, PC.

Dr. Wolff offers HIFU at a state-of-the-art facility near Charlotte, NC.

**HIFU Center of Excellence**  
**9735 Kinsey Avenue**  
**Suite 302**  
**Huntersville, NC 28078**



## Schedule a HIFU Treatment

Call today for more information or to schedule a HIFU consultation with Dr. Wolff.

**HIFU Prostate Services**  
**877.884.HIFU(4438)**  
**HIFUProstateServices.com**



## HIFU Treatment Information for Prostate Cancer

### About HIFU Prostate Services

HIFU Prostate Services was founded to provide men access to a less invasive treatment option for prostate cancer that has the ability to preserve patient quality of life as well as eliminate cancer.

We partner with the most experienced HIFU physicians and urology practices in the country to deliver the highest quality of care, support and technology to the patient and to the urology community.

We handle all the administrative duties of having a HIFU procedure, so your physician can focus on delivering the highest quality medical care.

#### **This includes:**

- Scheduling HIFU treatments
- Billing & payment collection
- Coordination of medical records
- Educational materials
- Financing options
- Patient Ambassador Program
- Travel support services



Non-Invasive Cancer Treatment

Contact us to learn more about our services or to schedule a procedure.

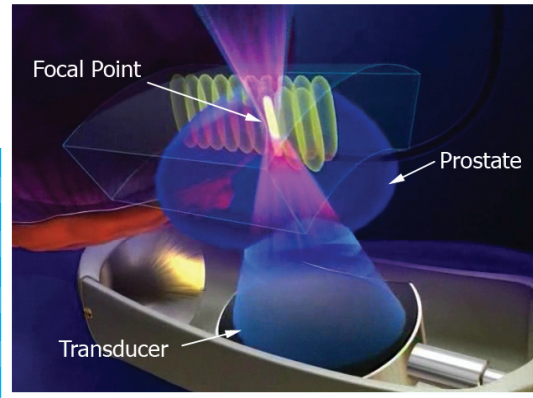
**877.884.HIFU(4438)**  
**HIFUProstateServices.com**



Non-Invasive Cancer Treatment

# What is HIFU?

High Intensity Focused Ultrasound (HIFU) uses sound waves to create heat at a precise point, called the focal point. HIFU is used to heat and destroy targeted tissue during a 1-4 hour outpatient procedure, depending on the size of the gland, that is individually customized for each patient's prostate cancer treatment.

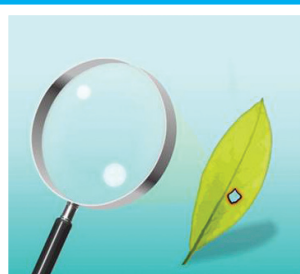


## HIFU for Prostate Cancer

- Non-invasive
- Single outpatient procedure
- Quick recovery
- Equivalent cancer control compared to surgery or radiation
- Radiation free
- Maintain quality of life
- No incision
- No blood loss
- Does not preclude any future treatment

## How It Works

Think about how a magnifying glass focuses light rays from the sun to a particular point and can burn a hole in a leaf.



HIFU works the same way. There is a transducer, which focuses sound waves to a precise point, that creates heat and destroys tissue at that point. Nothing outside of that focal point is damaged.

## Why Choose HIFU

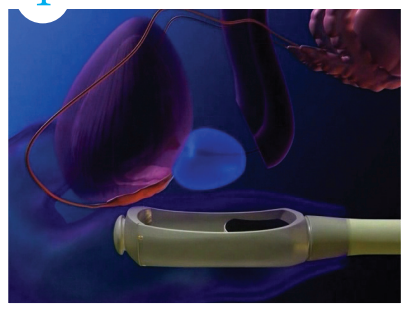
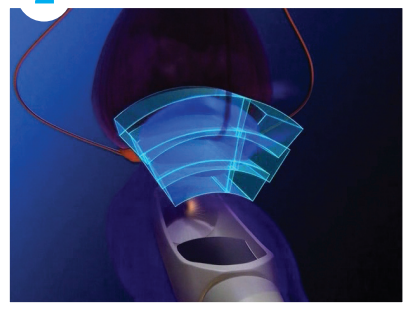
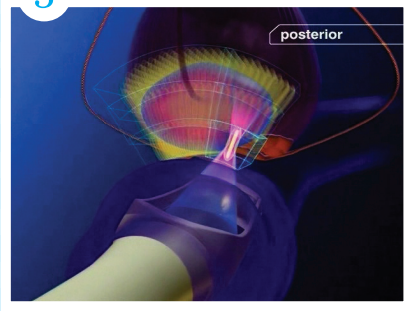
- HIFU has similar rates of efficacy as other treatment options for prostate cancer, such as surgery and radiation, with a lower risk of erectile dysfunction and incontinence.
- Men usually return to their normal lifestyle within a few days and the procedure can be repeated if necessary.
- It may be used as a salvage treatment option when a person has already had radiation, cryotherapy or surgery and the cancer has returned.
- HIFU does not preclude other treatment options.



## The Sonablate®

Sonablate® is the minimally invasive medical device used to deliver HIFU to the prostate during treatment. The state-of-the-art technology consists of a console where the physician plans, monitors and adjusts HIFU treatment, a transrectal probe and a chiller, which is a safety device that keeps the rectum cool during treatment.

## HIFU: 3 Simple Steps

1	Image	2	Plan	3	Treat
	Transducer in probe images the prostate		Physician plans, or maps out, what tissue to target.		Small lesions are created in the prostate at the focal point. This is repeated until all targeted tissue is destroyed.

## What You Can Expect

- The HIFU procedure typically lasts between 1-4 hours, depending on the size of the prostate, and is either done under general anesthesia or an epidural and IV sedation.
- In some cases, during the procedure, a suprapubic catheter will be put into place to help with urination.
- After the HIFU treatment, patients will be monitored for about 1-4 hours, depending on the size of the gland, before returning home.
- Most men resume their normal lifestyle within a few days.

### Want more information on what to expect?

Our Patient Ambassador Program will put you in touch with a patient who has had a HIFU treatment for prostate cancer.

### Ready to schedule a consultation?

Contact HIFU Prostate Services to learn more about our services or to schedule a procedure.

1-877-884-HIFU (4438)  
[HIFUProstateServices.com](http://HIFUProstateServices.com)